

PROFESSIONAL

# IP & SERIAL

## PTZ CAMERA JOYSTICK CONTROLLER



## PKC3000

The controller offers the ability to control iris, focus, white balance, exposure, and on-the-fly speed control to control the finer camera settings on the PTZ cameras.

- | Cross protocol mix-control with IP/ RS-422/ RS-485/ RS-232
- | Control protocol by VISCA, VISCA-Over-IP, Onvif and Pelco P&D
- | Control up to total of 255 IP cameras on a single network
- | 6 camera quick call up keys, and 6 user-assignable keys to quickly invoke shortcut functions
- | Quick control of exposure, shutter speed, iris, compensation, white balance, focus, pan/tilt speed, zoom speed
- | Tactile feel with professional rocker/seesaw switch for zoom control
- | Automatically search available IP cameras in a network and assign IP addresses easily
- | Multi-color key illumination indicator directs operation to specific functions
- | Tally GPIO output for indicating the camera be currently controlled
- | Metal housing with 2.2 inch LCD display, 4D joystick, 5 rotation button
- | Supports both POE and 12V DC power supplies





# CAMERA CONTROL PROTOCOL

The PKC3000 has a variety of control interfaces including IP, RS-422/ RS-485/ RS-232. The rich control interface makes it easy to match camera connections of different interfaces. It offers cross protocol mix-control on one controller operating Protocol by VISCA, VISCA Over IP, and Pelco P&D, as well as ONVIF. Control multiple different PTZ camera brands simultaneously, including AVMATRIX, HuddleCamHD, PTZOptics, Sony, BirdDog, and NewTek.



POWER SWITCH

DC 12V IN

GPIO  
For TALLY 1-7

RS-232  
PELCO-D, PELCO-P, VISCA

RS-422/485  
PELCO-D, PELCO-P, VISCA

IP  
ONVIF, VISCA Over IP

## IP Control

IP control is a very intelligent and convenient control mode. With IP control, automatically search available IP cameras in the network and assign IP addresses easily. IP control supports ONVIF, Visca Over IP.

## RS-232/485/422 Control

RS-232, RS-422, and RS-485 communication support protocol such as PELCO-D, PELCO-P, VISCA. Any device on the RS485 bus can be individually configured with different protocols and baud rates.





## Camera Quick Access Control

The controller offers the ability to control iris, auto exposure, white balance, and focus control to control the finer camera settings on the PTZ cameras.



## Menu Knob

Use for pan/tilt speed, and zoom speed control and PTZ camera own menu settings.



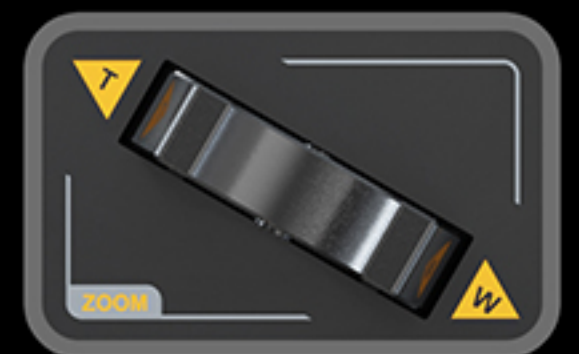
## 6 Camera Call Up & User-assignable keys

It can store up to 6 user-assignable keys, the default is quick call up for camera 1~6, and you can also set your own functions according to customer requirements.



## 4D Joystick & Rocker

High-quality 4D joystick enables you to control the speed of your pan, tilt, zoom, and lock moves. Tactile feel with professional rocker/ seesaw switch for zoom control.



## Camera & Position Setting

Automatically search available IP cameras in a network and assign IP addresses easily. With a 2-inch color LCD screen, you can quickly set and wake up the camera's control protocol and rotation Angle.





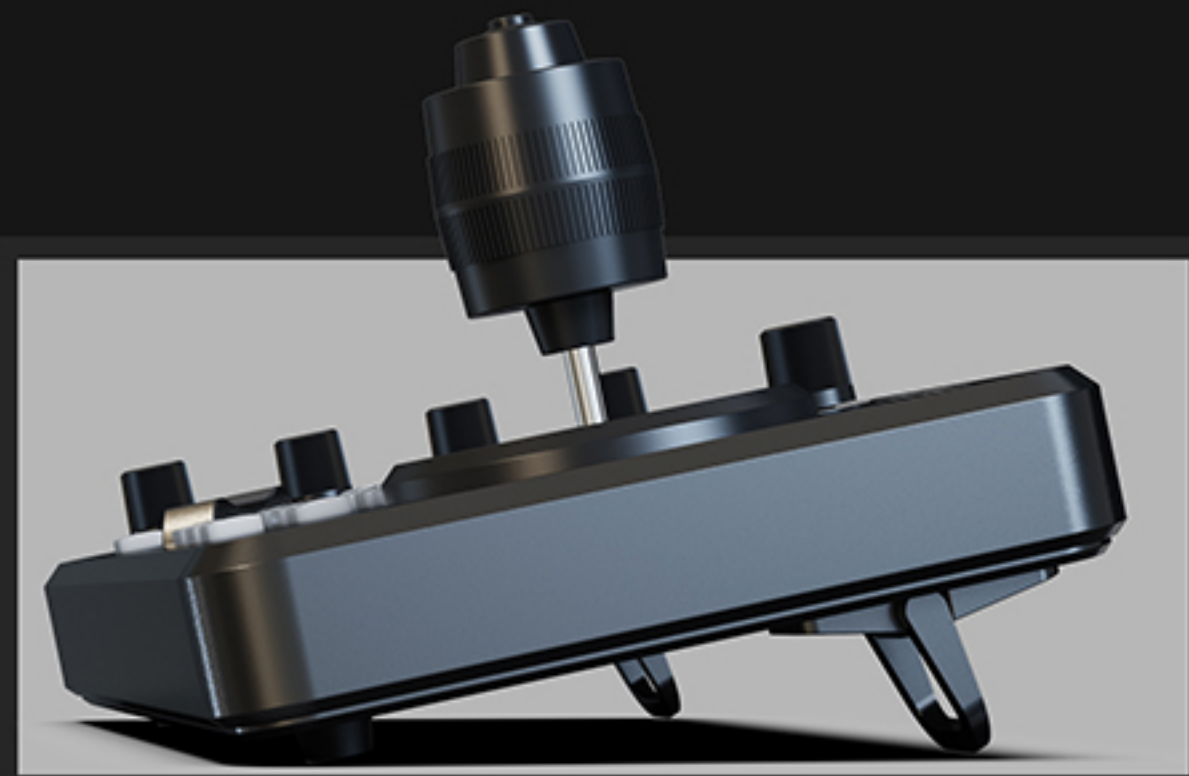


## Power-over-Ethernet (PoE) & DC Power supply

Control up to total of 255 IP cameras on a single network with PoE support. You can use not only traditional DC power supply but also POE power supply to set up in various locations.

### Aluminum Alloy Body

Aluminum alloy anodized fuselage, upgrade the product grade, and ensure the heat dissipation and stability of equipment.



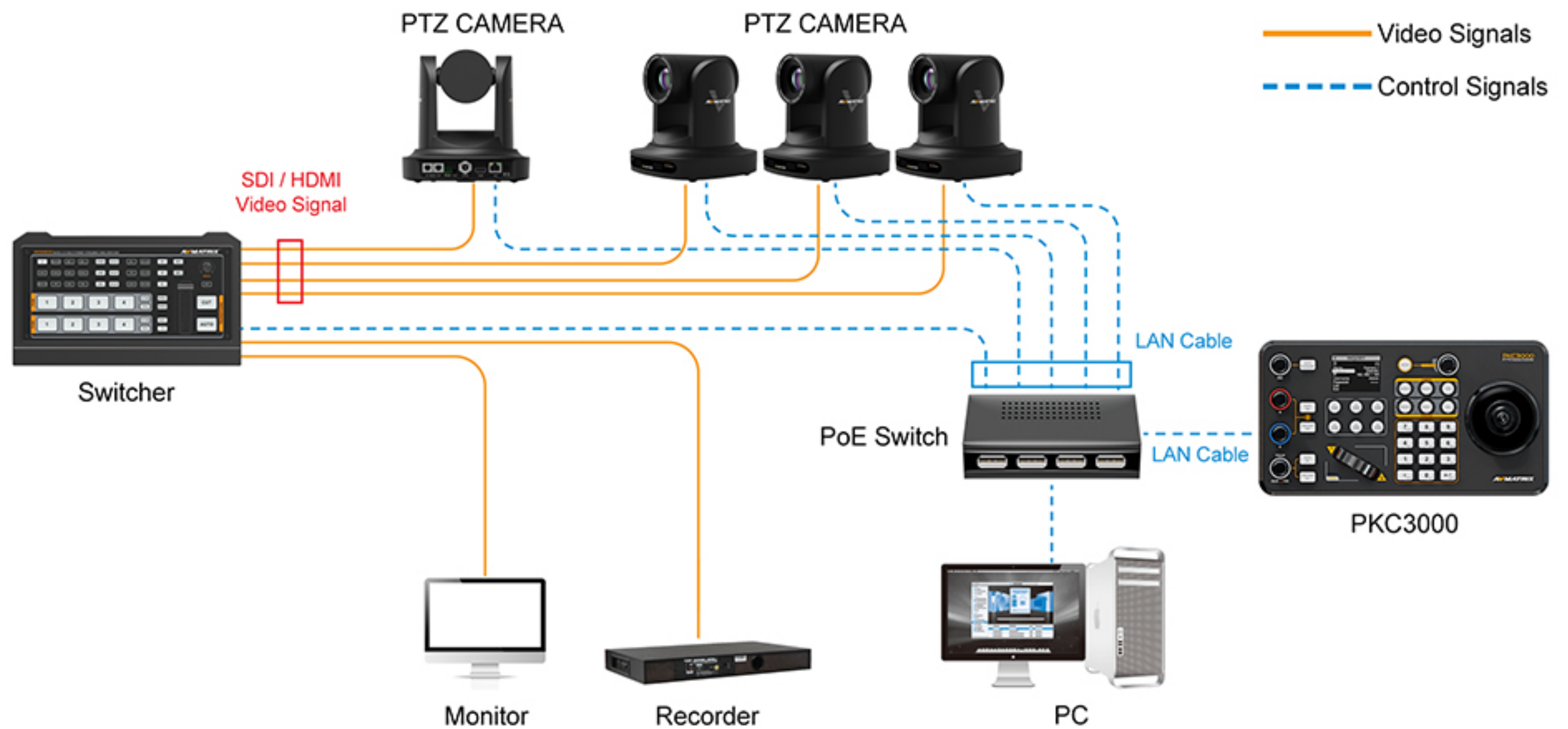
### Bracket Design

Easy installation and flexible application. This controller designed with a detachable bracket design.



# Connection Diagram

Adopt RS-232, RS-422, RS-485 and IP(RJ45) multiple interface control signal, up to 255 cameras can be connected. The following connection diagram shows how to control multiple cameras through IP through the PTZ controller.



# Application Fields

The controller can be widely used in various field events, such as education, conference, interviews, concert, health care, churches and other live broadcast activities.





# Specifications

CONNECTIONS	Interfaces	IP(RJ45), RS-232, RS-485/RS-422
	Control Protocol	IP Protocol: ONVIF, VISCA Over IP
		Serial Protocol: PELCO-D, PELCO-P, VISCA
Serial Baud Rate	2400, 4800, 9600, 19200, 38400 bps	
USER INTERFACES	Display	2.2 inch LCD
	Joystick	4D joystick (Pan/Tilt/Zoom/Lock)
	Camera shortcut	6 channel
	Keyboard	User-assignable keys×6, Rotation button×5, Rocker×1, Seesaw×1
	Camera Address	Up to 255
	Preset	Up to 255
POWER	Power	PoE/ DC 12V
	Power Consumption	PoE: 5W, DC: 5W
ENVIRONMENT	Working Temperature	-20℃~60℃
	Storage Temperature	-40℃~80℃
DIMENSION	Dimension(LWD)	270mm×145mm×29.5mm/ 270mm×145mm×106.6mm(With joystick)
	Weight	1181g



## ACCESSORIES



12V DC Power Adapter



9 PIN GPIO Connector

